



National Hauora Coalition Primary Care Network

Newsletter



Platform for Success

Kia ora, and warm winter greetings to everyone.

This newsletter goes out in depths of winter, early in the new year (based on either the financial calendar or the Maori calendar). Traditionally the end of year has been an opportunity to reflect on the achievements and challenges of the last year, and to plan for the coming year. It is with a huge sense of pride that NHC PHO Performance Programme (PPP) achievement is detailed in this newsletter, and indeed it is recognised throughout the sector as a significant achievement, and a significant clinical contribution to outcomes for thousands of our patients and whanau. Congratulations to you all.

The excellent result for NHC is also a very important basis for the new Integrated Performance and Incentive Framework (IPIF). IPIF replaces PPP – and the current starting point is widely accepted as being somewhat underwhelming. IPIF reduces the measures from eleven to five, but has a stated intention to develop new system level measures. The new measures require an intense development period to ensure that primary care can clearly see the contribution that we make towards better health outcomes for all populations, improved quality, safety and experience of care, and best value for public health resources. Each PHO will be placed on one of the four tiers based on performance, and movement through those tiers will bring financial reward and opportunities for innovation and

influence. NHC is well placed, currently in terms of both our performance and our influence. My team here is fully committed to working with you to ensure that you meet the new minimum requirements (the RNZCGP Foundation Standards) and that we maintain our excellent performance.

I am also pleased to report that many of our providers are reporting growth in registers, and some are planning further expansion of clinics and services and even new buildings. We have several new practices recently joined or applying to join. We have good reasons to look forward with confidence.

The final results for our national health target achievement were a huge success. The partnership between our general practice and NHC staff in order to achieve these results was remarkable and unique in many areas.

The results over the financial year were:

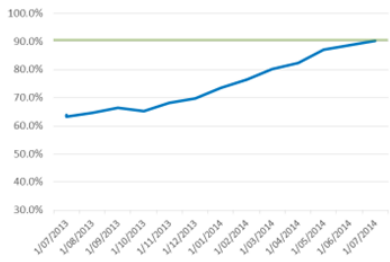
- Our CVD Risk Assessment performance increased from 63% to 90%
- Our Smoking status recorded ('A') increased from 76% to 90%
- Our Smoking brief advice or cessation ('B' and/or the 'C') increased from 35% to 85%. When published nationally the Ministry of Health provide a further adjustor to this indicator shifting up our published result to 98%.
- In the final quarter we reached 92% for 8 month year old vaccinations; our average across the year was 90%
- In the final quarter we met the target of 95% 2 year old vaccinated; our average across the year was 93%

Our PHO's rankings nationwide:

- 3rd overall for Better Help for Smokers to Quit
- 6th overall for More Heart and Diabetes Checks
- 31st for Increased Immunisations

As we near the end of the 1st quarter of IPIF and FFPv2 performance targets remain a key driver to practice success and financial remuneration. We encourage you to look at the weekly emails, have your clinical teams access the daily patient lists and monitor your monthly FFP performance payments to ensure that you are maintaining your performance and payments.

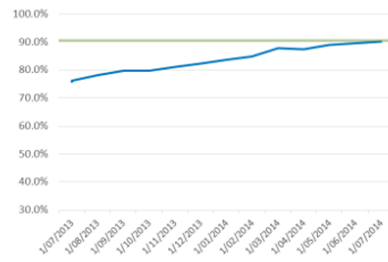
CVD Risk Assessment



90.3%
NHC Total

92.0%	ADHB
90.8%	CMDHB
89.2%	Tairāwhiti DHB
86.9%	Waikato DHB
90.7%	Waitemata

Smoking Status Recorded

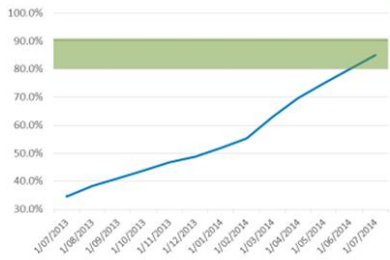


90.3%
NHC Total

86.7%	ADHB
91.5%	CMDHB
93.8%	Tairāwhiti DHB
95.2%	Waikato DHB
91.4%	Waitemata

Smokers Given B or C

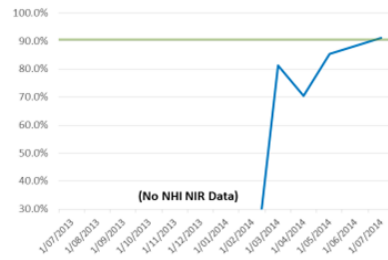
(Unadjusted - expect +10%)



85.0%
NHC Total

86.3%	ADHB
80.0%	CMDHB
82.3%	Tairāwhiti DHB
82.7%	Waikato DHB
90.1%	Waitemata

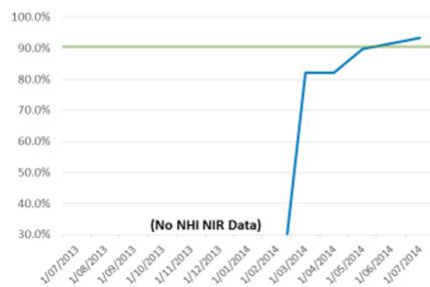
Immunisations: 8 Month



91.9%
NHC Total

95.1%	ADHB
78.1%	CMDHB
95.1%	Tairāwhiti DHB
84.04%	Waikato DHB
97.0%	Waitemata

Immunisations: 24 Month

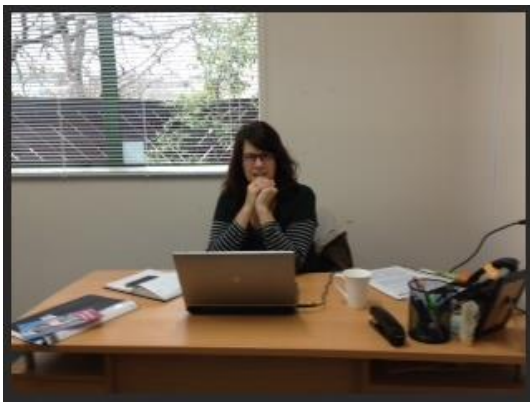


94.5%
NHC Total

97.2%	ADHB
93.3%	CMDHB
91.1%	Tairāwhiti DHB
90.6%	Waikato DHB
96.0%	Waitemata

Opening of the Waikato Office

In July NHC's Waikato branch opened a new office in Hamilton. At the official opening on 2nd July the office was blessed by Henare Mason and given the name Heretahi. Representatives from NHC Executive, Waikato practice network and Waikato DHB attended the opening. If you're in the area feel free to stop in and say hi to the Waikato team, Linda and Penny. The office is located at 8/9 Lynden Court, Chartwell.



Cervical Screening Useful Links

From the 1st July, Cervical Screening has come in as a new IPIF target. Some useful resources and tips can be found the following sites:

- [National Screening Unit](#)

- [Family Planning](#)

You can arrange education through:

- [Family Planning](#)

- [WONS](#)

For our Auckland based providers NHC are hosting a CME/CNE on 29th October with Dr Hazel Lewis, Clinical Leader at the National Cervical Screening Programme, Ministry of Health. More information will be sent out about this event soon but in the meantime mark this date in your diaries.

Commerce Commission launch website for the health sector

The Commerce Commission has launched a new website aimed at helping the health sector understand more about competition and consumer laws. Some useful articles can be found on offering credit to patients, promoting your clinic and setting fees. To go to the website [click here](#).



Upcoming Events

September

9

Practical Diabetes Workshop for Nurses, 6.30pm at Te Hononga, 519 Great South Road, Otahuhu.

September

16

Health Information Privacy Workshop, 6.30pm at NHC Head Office, 485B Rosebank Road, Avondale.

September

25

Child and Adolescent Mental Health CME/CNE, 6.30pm at NDSA, 650 Great South Road, Penrose.

October

15

Dealing with Difficult People for Frontline staff, 6.30pm at NHC Head Office, 485B Rosebank Road, Avondale.

October

21

Weight Management and Diabetes CME, 6pm, Hamilton.

October

29

Cervical Screening CME/CNE, 6.30pm at NHC Head Office, 485B Rosebank Road, Avondale.

Copyright © 2014 National Hauora Coalition, All rights reserved.

Our mailing address is:
National Hauora Coalition
485B Rosebank Road
Avondale
Auckland, Auckland 1140
New Zealand